

GVJ Inc.

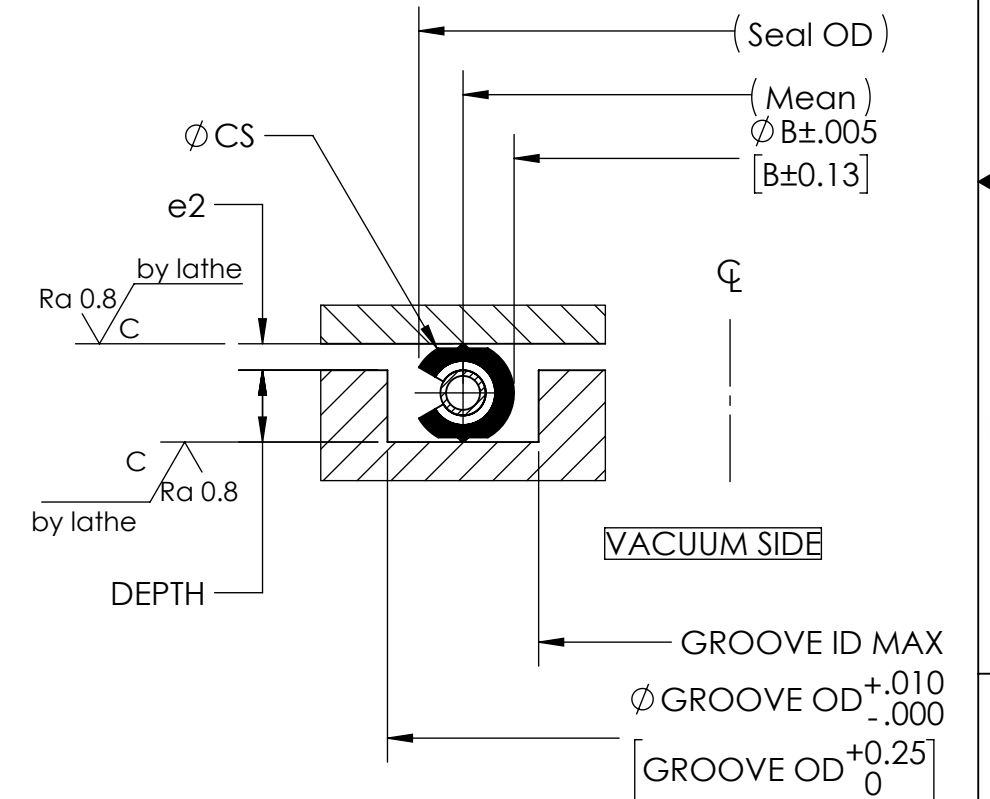
HNV200 FOR STANDARD JIS2290


THIS DRAWING CONTAINS PROPRIETARY INFORMATION BELONGING TO TECHNICS GROUP, AND IS PROVIDED FOR ENGINEERING EVALUATION AND/OR RECEIVING AND INSPECTION PURPOSES ONLY. IT HAS BEEN ENTRUSTED TO THE RECIPIENT WITH THE UNDERSTANDING THAT ITS USE WILL BE RESTRICTED TO SUCH PURPOSE. COPYING, TRACING, AND OTHER TYPES OF REPRODUCTION FOR MANUFACTURING AND/OR COMPETITIVE PROCUREMENT IS EXPRESSLY PROHIBITED BY TECHNICS GROUP.

NOTES:

- CUSTOMER IS TO VERIFY BOLTING/ CLAMPING FORCE TO ENSURE PROPER LOAD TO COMPRESS SEAL & HOLD HYDROSTATIC END FORCES. ALL CALCULATIONS ARE AT ROOM TEMPERATURE.  
TOTAL EST. SEATING LOAD: SEE TABLE [N]  
TOTAL EST. END FORCES: 0 [N]  
TOTAL EST. LOAD: SEE TABLE [N]
- THESE VALUES ARE ONLY GUIDELINES AT BEST. CUSTOMER IS RESPONSIBLE FOR AND SHOULD VERIFY BOLT STRENGTH AND SAFETY FACTORS.
- CUSTOMER IS RESPONSIBLE FOR FLANGE DESIGN AND TORQUE SPECIFICATIONS.
- GROOVE POLISHING MARKS MUST FOLLOW SEAL CIRCUMFERENCE.
- CUSTOMER IS TO APPROVE DESIGN.
- CUSTOMER IS TO VERIFY SEAL MATERIALS ARE COMPATIBLE WITH CHEMICAL AND TEMPERATURE REQUIREMENTS
- MINIMUM HARDNESS OF THE SEALING SURFACES: 65HV

DN	V#	PN	GROOVE ID		GROOVE OD		DEPTH		SEAL ID		SEAL OD		CS		Y2	SEATING LOAD	MAX TEMPERATURE
			inch	[mm]	inch	[mm]	inch	[mm]	inch	[mm]	inch	[mm]	inch	[mm]			
10	V24	H-313415-V24	0.945	24	1.339	34	0.118	3	0.988	25.1	1.275	32.38	0.154	3.9	140	12,755	280
20	V34	H-313415-V34	1.339	34	1.732	44	0.118	3	1.382	35.1	1.668	42.38	0.154	3.9	140	17,153	280
25	V40	H-313415-V40	1.575	40	1.969	50	0.118	3	1.618	41.1	1.905	48.38	0.154	3.9	140	19,792	280
40	V55	H-313415-V55	2.165	55	2.559	65	0.118	3	2.209	56.1	2.495	63.38	0.154	3.9	140	26,389	280
50	V70	H-313415-V70	2.756	70	3.150	80	0.118	3	2.799	71.1	3.086	78.38	0.154	3.9	140	32,987	280
65	V85	H-313415-V85	3.346	85	3.740	95	0.118	3	3.390	86.1	3.676	93.38	0.154	3.9	140	39,584	280
80	V100	H-313415-V100	3.937	100	4.331	110	0.118	3	3.980	101.1	4.267	108.38	0.154	3.9	140	46,181	280
100	V120	H-313415-V120	4.724	120	5.118	130	0.118	3	4.768	121.1	5.054	128.38	0.154	3.9	140	54,978	280
	V130	H-313415-V130	5.118	130	5.512	140	0.118	3	5.161	131.1	5.448	138.38	0.154	3.9	140	59,376	280
125	V150	H-313415-V150	5.906	150	6.299	160	0.118	3	5.949	151.1	6.235	158.38	0.154	3.9	140	68,173	280
	V165	H-313415-V165	6.496	165	6.890	175	0.118	3	6.539	166.1	6.826	173.38	0.154	3.9	140	74,770	280
150	V175	H-313415-V175	6.890	175	7.283	185	0.118	3	6.933	176.1	7.220	183.38	0.154	3.9	140	79,168	280
200	V225	H-313415-V225	8.858	225	9.488	241	0.177	4.5	8.949	227.3	9.368	237.94	0.224	5.7	150	109,799	320
	V240	H-313415-V240	9.449	240	10.079	256	0.177	4.5	9.539	242.3	9.958	252.94	0.224	5.7	150	116,867	320
250	V275	H-313415-V275	10.827	275	11.457	291	0.177	4.5	10.917	277.3	11.336	287.94	0.224	5.7	150	133,361	320
300	V325	H-313415-V325	12.795	325	13.425	341	0.177	4.5	12.886	327.3	13.305	337.94	0.224	5.7	150	156,923	320
350	V380	H-313415-V380	14.961	380	15.591	396	0.177	4.5	15.051	382.3	15.470	392.94	0.224	5.7	150	182,841	320
400	V430	H-313415-V430	16.929	430	17.559	446	0.177	4.5	17.020	432.3	17.438	442.94	0.224	5.7	150	206,403	320
450	V480	H-313415-V480	18.898	480	19.843	504	0.276	7	19.043	483.7	19.653	499.19	0.327	8.3	150	231,850	340
500	V530	H-313415-V530	20.866	530	21.811	554	0.276	7	21.012	533.7	21.622	549.19	0.327	8.3	150	255,411	340
550	V585	H-313415-V585	23.031	585	23.976	609	0.276	7	23.177	588.7	23.787	604.19	0.327	8.3	150	281,330	340
600	V640	H-313415-V640	25.197	640	26.142	664	0.276	7	25.343	643.7	25.952	659.19	0.327	8.3	150	307,248	340
650	V690	H-313415-V690	27.165	690	28.110	714	0.276	7	27.311	693.7	27.921	709.19	0.327	8.3	150	330,810	340
700	V740	H-313415-V740	29.134	740	30.079	764	0.276	7	29.280	743.7	29.889	759.19	0.327	8.3	150	354,372	340
750	V790	H-313415-V790	31.102	790	32.047	814	0.276	7	31.248	793.7	31.858	809.19	0.327	8.3	150	377,934	340
800	V845	H-313415-V845	33.268	845	34.213	869	0.276	7	33.413	848.7	34.023	864.19	0.327	8.3	150	403,852	340
900	V950	H-313415-V950	37.402	950	38.346	974	0.276	7	37.547	953.7	38.157	969.19	0.327	8.3	150	453,332	340
1000	V1055	H-313415-V1055	41.535	1055	42.480	1079	0.276	7	41.681	1058.7	42.291	1,074.19	0.327	8.3	150	502,812	340
1200	V1260	H-313415-V1260	49.606	1260	50.551	1284	0.276	7	49.752	1263.7	50.362	1,279.19	0.327	8.3	150	599,416	340



DO NOT SCALE DRAWING UNLESS OTHERWISE SPECIFIED DIMENSIONS ARE IN INCHES TOLERANCES ARE: FRACTIONS - DECIMALS - ANGLES ± 1/16 .XXX ± .010 ± 1° .XXX ± .005 .XXXX ± .0005		 Technetics Group Columbia 2791 The Boulevard Columbia, SC 29209 USA 803 783 1880 800 233 1722 FAX 803 783 4279 EnPro Industries companies	
APPROVALS		DRAWN: G.TOCHEPORT - 27 June 2018	
SEAT LOAD: SEE TABLE		CHECKED:	
STUDY: 180Z1781		APPROVED:	
COMPRESSION: SEE TABLE		DRAWING NO. <b>H-313415</b>	
WORKING/ PROOF TEMP: SEE TABLE		CAGE CODE: 56257	
SEATING LOAD: SEE TABLE		FACILITY NUMBER:	
STUDY: 180Z1781		SHEET 1 OF 2	

COMPRESSION: SEE TABLE	WORKING/ PROOF TEMP: SEE TABLE	MATL: Al + high strength alloys
SEATING LOAD: SEE TABLE	WORKING/ PROOF PRESS: VACUUM	PLATE: None
STUDY: 180Z1781	MEDIA: VACUUM	HEAT TREAT: None